

201 11.6 HW

Key p 765 1-4, 14-16, 27-29

1. F

2.  $\angle AFE$

3.  $\overline{AF}$  or  $\overline{EF}$  or  $6.8_u$

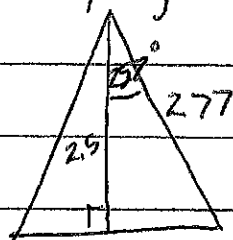
4.  $\overline{FG}$  or  $5.5_u$

14.  $A = \frac{1}{2}(2\sqrt{3})(36)$

$36\sqrt{3} u^2 \approx 62.4 u^2$

16. heptagon  $360 \div 7$

$\div 2 \approx 25.7$



$\sin 25.7 = \frac{b}{2.77}$

$1.2 = b$

$\times 2$

2.4 perimeter

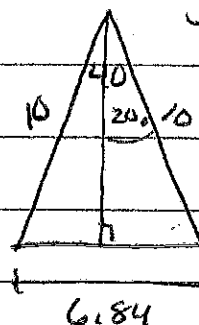
$2.4 \times 7$

$p \approx 16.8$

$A = \frac{1}{2} 2.5 \cdot 16.8$

$21.0 u^2$

15. nonagon



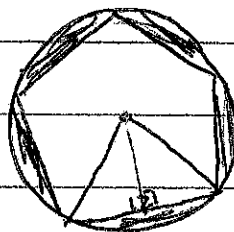
$A = \frac{1}{2}(9.396)(61.56)$

$A \approx 289.2 u^2$

$\tan 20 = \frac{3.42}{a}$

$a \approx 9.396$

27.



$\tan 36 = \frac{b}{a}$

$a \approx 8.3$



$\sin 36 = \frac{b}{r}$

$r \approx 10.2$

$A_{\text{circle}} - A_{\text{pent.}}$

$\pi(10.2)^2 - \frac{1}{2} 8.3(60)$

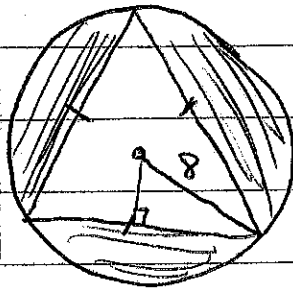
$326.9 - 249$

$77.9 u^2$

If you store answers

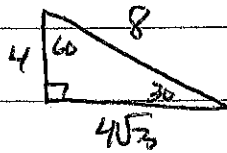
$77.9 u^2$

28.



$$\text{Area} = A_{\Delta}$$

$$64\pi - \frac{(8\sqrt{3})^2 \sqrt{3}}{4}$$

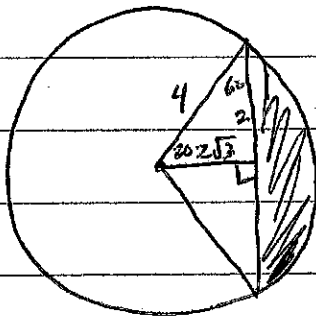


$$\text{side} = 8\sqrt{3}$$

$$201 - 83.1$$

$$117.9 \text{ u}^2$$

29.



60°

$$60 \rightarrow \frac{60}{360} 16\pi = \frac{1}{6} 4 \cdot 2\sqrt{3}$$

$$8.37758$$

$$8.4 - 6.928$$

$$1.4 \text{ u}^2$$